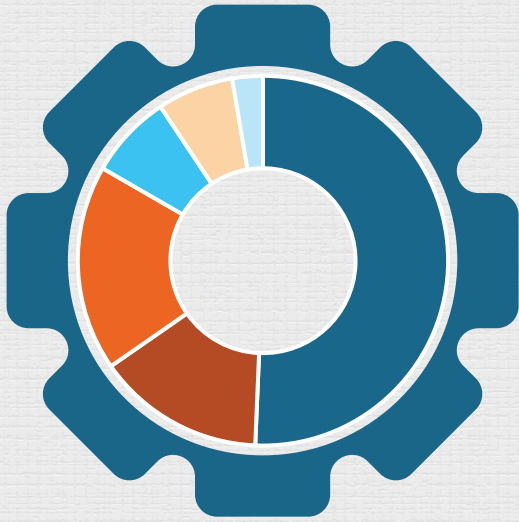


Program activity for TAACCCT concluded in March 2018. Since then, INTECH has received funding through a number of grants and contracts to continue offering accelerated training programs for entry-level and incumbent workers.



TAACCCT FUNDING BREAKDOWN

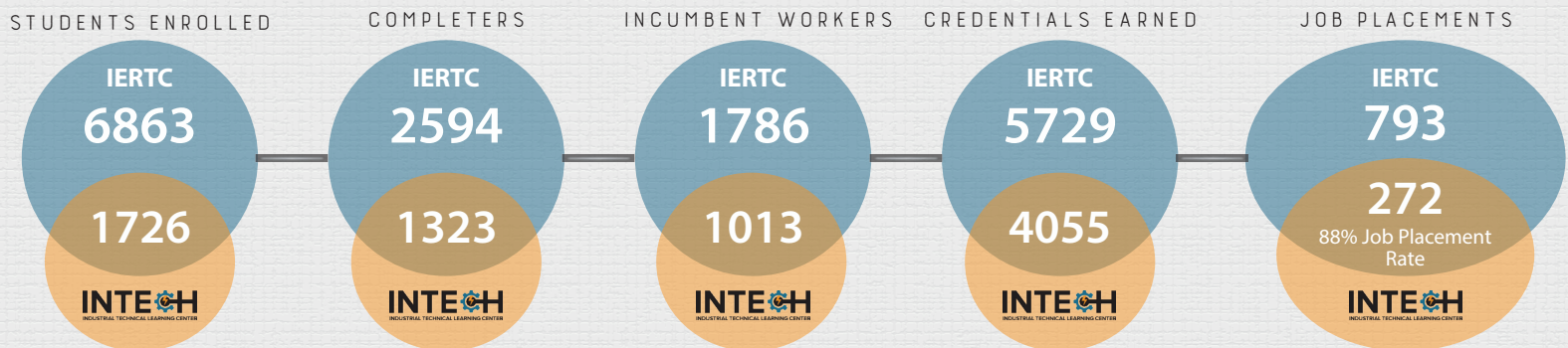
The Inland Empire Regional Training Consortium (IERTC) received \$14.9M from the Department of Labor. It consisted of **10** community colleges, **2** universities and **2** workforce development boards to provide accelerated training to low-income individuals in the Inland/Desert region.

Community Colleges, Universities and Workforce Development Boards: **\$7.6M**
 INTECH Renovations: **\$2.2M**
 INTECH Operations: **\$2.7M**

INTECH Equipment: **\$1.1M**
 Third Party Evaluations: **\$1M**
 Chaffey Indirect: **\$388K**

TAACCCT ECONOMIC IMPACT

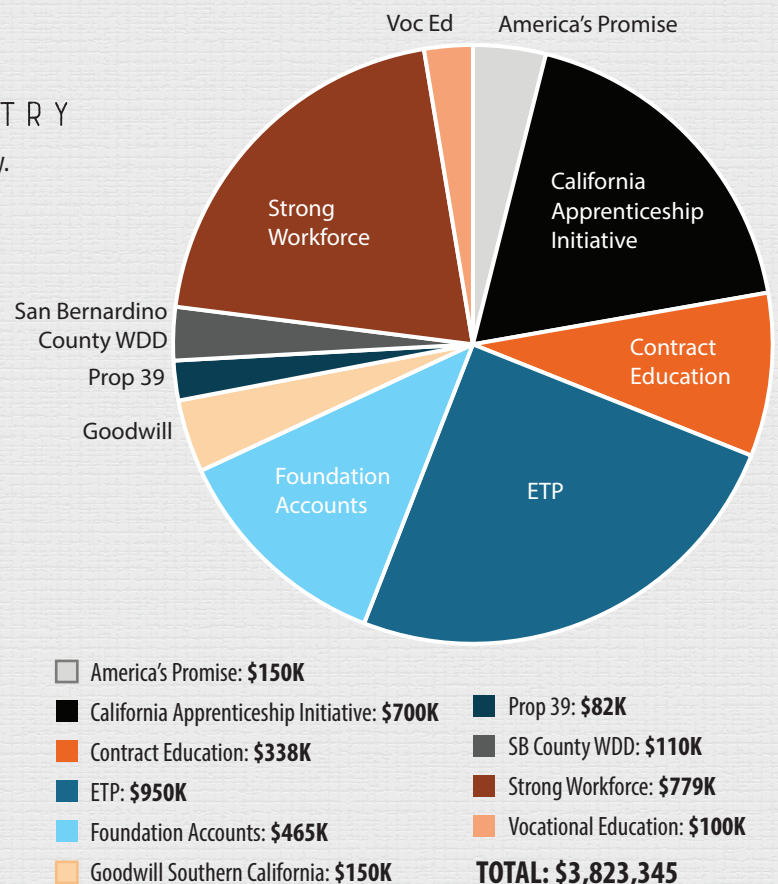
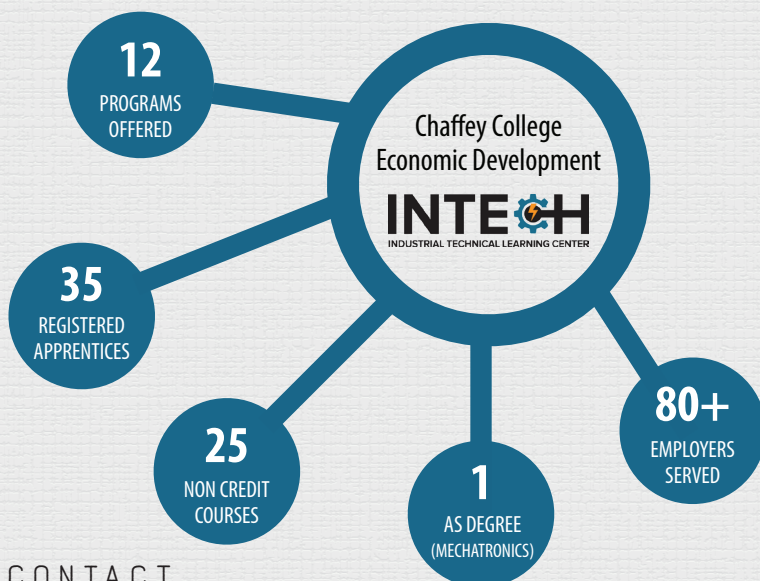
From 2014-2018, TAACCCT had an enormous impact on employers, community members and their families. At the 12-month follow-up, there was a 25% decrease in individuals using government assistance.



BEYOND TAACCCT...

DESIGNED BY INDUSTRY FOR INDUSTRY

Chaffey College INTECH Center continues to meet the needs of business and industry.



CONTACT

INTECH Center
 (909) 652-8488
intechcenter@chaffey.edu